

Think SDGs through CLIL CLILでSDGsを考えよう

How to create a barrier free culture

- Date & time** Thursday, March 27, 2pm to 5pm / 3月27日(木) 2時~5時
- Venue** Bukyo Gakuin University, Hongo Campus / 文京学院大学 本郷キャンパス
- Participants** High school, University, and International students (including CLIL practitioners) / 高校生、大学生、留学生など (CLIL教育関係者含む)
- Participation fees** Free of charge Reservation required / 無料 要予約
- Donation** We welcome your donation / 活動支援として寄付は受け付けます
- Activities** Think about barrier-free culture and SDG 11 through CLIL / バリアフリーとSDG 11をCLILで考える
- Hosts** CLIL-ite (教員研修研究所) & J-CLIL (日本CLIL教育学会)
- Coordinators** 笹島茂、椿まゆみ、ブリタニカ・ジャパン、CLIL-ite会員、文京学院大学生
- Contact** CLIL-ite office / 事務局 infoclilite@gmail.com
- Application** [Google Form](#)
To be closed after reaching capacity (20 persons)

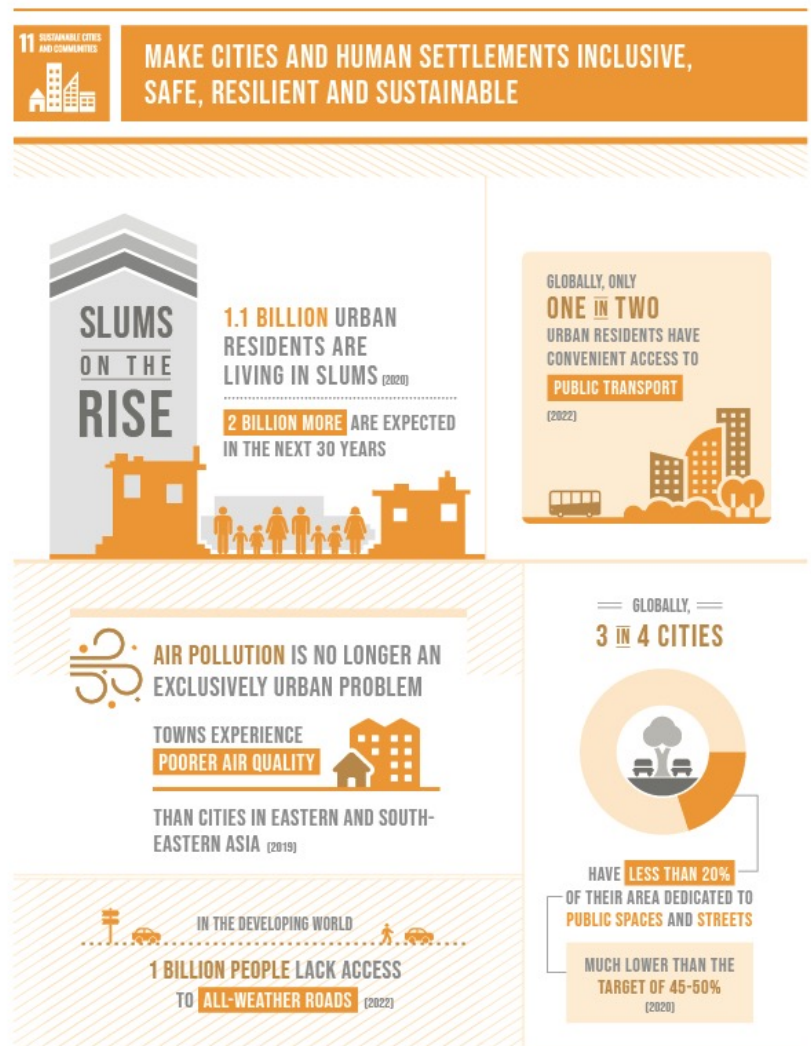


SDG 11 Sustainable cities and communities

Focusing on SDG 11 (Sustainable cities and communities), you think about barrier-free culture in schools, campuses, or communities. At the workshop, you try to find it in a group by using English and Japanese. It's CLIL. Enjoy experiencing CLIL activities. Why not join us!

Task: You will make a poster of SDG 11 in English.

バリアフリーの現状はどうなっているのでしょうか？キャンパスや街を歩いて確認して、CLILで考えましょう





CLIL Workshop Plurilingual & pluricultural communication in our daily life
CLIL is Content and Language Integrated Learning, which is based on bilingual education



Think SDGs through CLIL

CLILでSDGsを考えよう

How to create a barrier free culture

Date & time	Thursday, March 27, 2pm to 5pm / 3月27日(木) 2時~5時
Venue	Bukyo Gakuin University, Hongo Campus / 文京学院大学 本郷キャンパス
Participants	High school, University, and International students (including CLIL practitioners) / 高校生、大学生、留学生など (CLIL教育関係者含む)
Participation fees	Free of charge Reservation required / 無料 要予約
Donation	We welcome your donation / 活動支援として寄付は受け付けます
Activities	Think about barrier-free culture and SDG 11 through CLIL / バリアフリーとSDG 11をCLILで考える
Hosts	CLIL-ite (教員研修研究所) & J-CLIL (日本CLIL教育学会)
Coordinators	笹島茂、椿まゆみ、ブリタニカ・ジャパン、CLIL-ite会員、文京学院大学生
Contact	CLIL-ite office / 事務局 infoclilite@gmail.com
Application	Google Form To be closed after reaching capacity (20 persons)



SDG 11 Sustainable cities and communities

Focusing on SDG 11 (Sustainable cities and communities), you think about barrier-free culture in schools, campuses, or communities. At the workshop, you try to find it in a group by using English and Japanese. It's CLIL. Enjoy experiencing CLIL activities. Why not join us!

Task: You will make a poster of SDG 11 in English.

バリアフリーの現状はどうなっているのでしょうか？キャンパスや街を歩いて確認して、CLILで考えましょう



CLIL Workshop Plurilingual & pluricultural communication in our daily life
CLIL is Content and Language Integrated Learning, which is based on bilingual education



Think SDGs through CLIL CLILでSDGsを考えよう

SDG 11 Sustainable cities and communities



Application here → Google Form

To be closed after reaching capacity (20 persons)

Date & time

Thursday, March 27, 2pm to 5pm

Venue

Bukyo Gakuin University, Hongo Campus

Participants

**High school, University, and International students
(including CLIL practitioners)**

Participation fees

Free of charge / Reservation required

Donation

We welcome your donation

Activities

Think about barrier-free culture and SDG 11 through CLIL

Hosts

CLIL-ite & J-CLIL

Coordinators

**Shigeru Sasajima、 Mayumi Tsubaki、 Britannica Japan, CLIL-ite,
Bukyo Gakuin University students**

Contact

CLIL-ite office infoclilite@gmail.com





CLIL Workshop Plurilingual & pluricultural communication in our daily life
CLIL is Content and Language Integrated Learning, which is based on bilingual education



Think SDGs through CLIL CLILでSDGsを考えよう

SDG 11 Sustainable cities and communities



日時
場所
参加者

3月27日(木) 2時~5時
文京学院大学 本郷キャンパス
高校生、大学生、留学生など
(CLIL教育関係者含む)

参加費
寄付
活動
主催

無料/ 予約要
活動の寄付を募ってます

Think about barrier-free culture and SDG 11 through CLIL
CLIL-ite & J-CLIL

コーディネーター 笹島茂、椿まゆみ、ブリタニカ・ジャパン、
CLIL-ite, 文京学院大学生

問合せ

CLIL-ite 事務局 infoclilite@gmail.com



Think SDGs through CLIL CLILでSDGsを考えよう

Thursday, March 27, 2pm to 5pm

Bukyo Gakuin University, Hongo Campus

High school, University, and International students (including CLIL practitioners)

Think about barrier-free culture and SDG 11 through CLIL

高校生、大学生、留学生など来てください (CLIL教育関係者も可)

3月27日 (木) 2時~5時

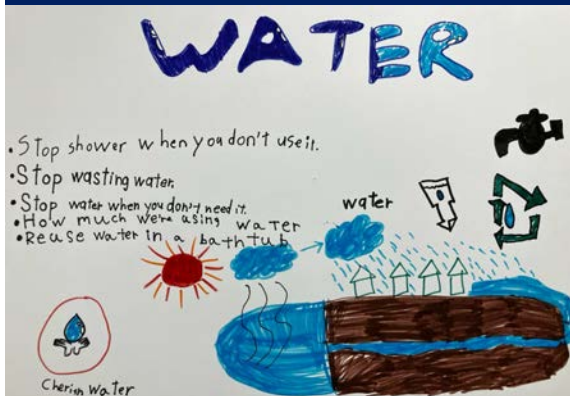
文京学院大学 本郷キャンパス

バリアフリーとSDG 11をCLILで考える

How to create a barrier free culture



SDG 11 Sustainable cities and communities



SUSTAINABLE DEVELOPMENT GOALS



11 SUSTAINABLE CITIES AND COMMUNITIES

MAKE CITIES AND HUMAN SETTLEMENTS INCLUSIVE, SAFE, RESILIENT AND SUSTAINABLE

SLUMS ON THE RISE

1.1 BILLION URBAN RESIDENTS ARE LIVING IN SLUMS (2020)

2 BILLION MORE ARE EXPECTED IN THE NEXT 30 YEARS

GLOBALY, ONLY **ONE IN TWO** URBAN RESIDENTS HAVE CONVENIENT ACCESS TO **PUBLIC TRANSPORT** (2022)

AIR POLLUTION IS NO LONGER AN EXCLUSIVELY URBAN PROBLEM

TOWNS EXPERIENCE **POORER AIR QUALITY**

THAN CITIES IN EASTERN AND SOUTH-EASTERN ASIA (2019)

GLOBALY, **3 IN 4 CITIES**

HAVE **LESS THAN 20%** OF THEIR AREA DEDICATED TO **PUBLIC SPACES AND STREETS**

MUCH LOWER THAN THE TARGET OF 45-50% (2020)

IN THE DEVELOPING WORLD

1 BILLION PEOPLE LACK ACCESS TO ALL-WEATHER ROADS (2022)

THE SUSTAINABLE DEVELOPMENT GOALS REPORT 2023: SPECIAL EDITION- UNSTATS.UN.ORG/SDGS/REPORT/2023/

Think SDGs through CLIL CLILでSDGsを考えよう

How to create a barrier free culture

高校生、大学生、留学生など来てください
(CLIL教育関係者も可)
3月27日(木) 2時~5時
文京学院大学 本郷キャンパス
バリアフリーとSDG 11をCLILで考える



Thursday, March 27, 2pm to 5pm
Bukyo Gakuin University, Hongo Campus
High school, University, and international students (including CLIL practitioners)
Think about barrier-free culture and SDG 11 through CLIL

SDG 11 Sustainable cities and communities

Focusing on SDG 11 (Sustainable cities and communities), you think about barrier-free culture in schools, campuses, or communities. At the workshop, you try to find it in a group by using English and Japanese. It's CLIL. Enjoy experiencing CLIL activities. Why not join us!

Task: You will make a poster of SDG 11 in English.

バリアフリーの現状はどうなっているのでしょうか？キャンパスや街を歩いて確認して、CLILで考えましょう

